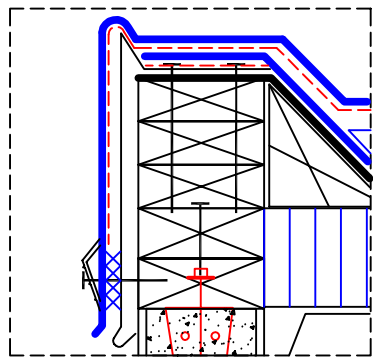
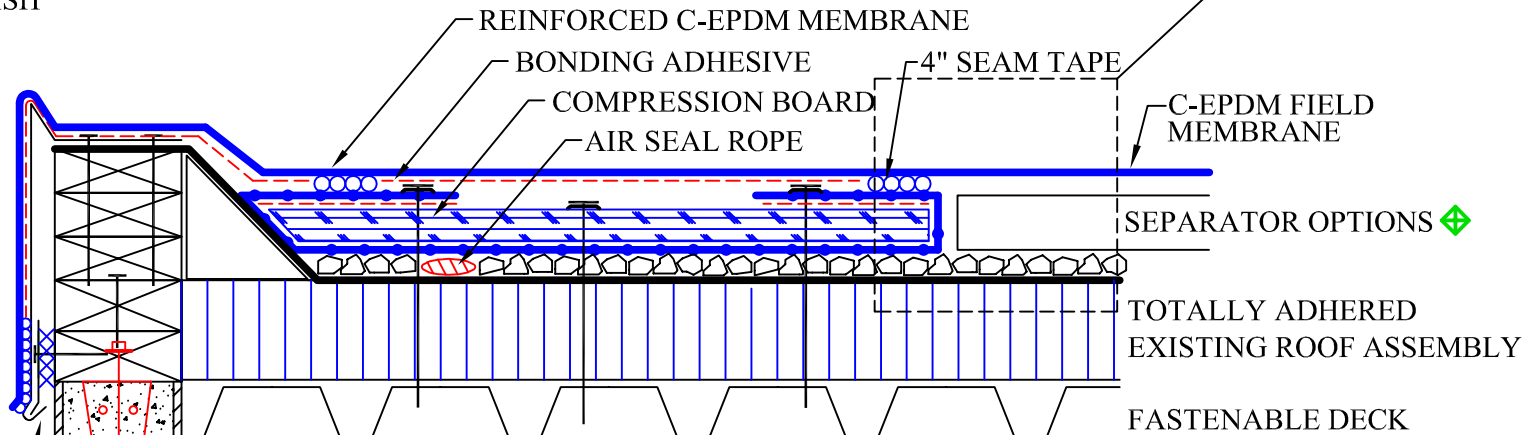
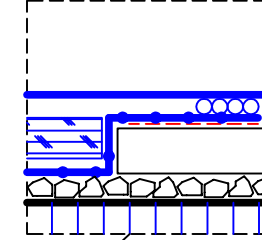


HURRICANE BACKWRAP COMPRESSION BOARD AIR SEAL WITH RAISED GRAVEL STOP PERIMETER UP TO 120 MPH WIND RIDER * C-EPDM MEMBRANE



ALTERNATE FINISH

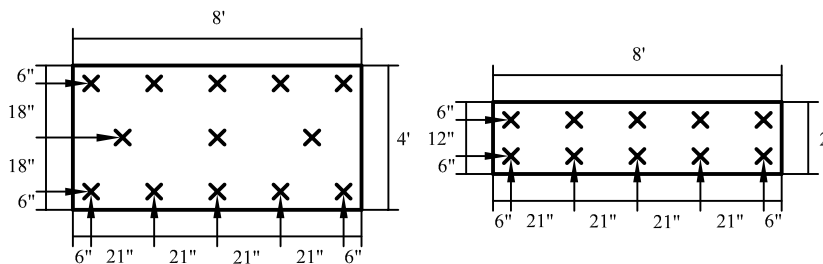
ALTERNATE FINISH



COMPRESSION BOARD AIR SEAL

MINIMUM $\frac{1}{2}$ " CDX PLYWOOD OR $\frac{7}{16}$ " OSB BOARD

- A) 2' COMPRESSION BOARD ON BUILDINGS
29' OR LESS IN HEIGHT AND INTERNAL PENETRATIONS
- B) 4' COMPRESSION BOARD ON BUILDINGS
30' OR HIGHER AND 90 MPH OR GREATER WIND RIDERS
FASTENED WITH #14 ROOF SCREWS AND 2" FLAT WASHERS



SEPARATOR OPTIONS:

- 1) 2001 GRAVEL MAT
- 2) $\frac{1}{2}$ " GYPSUM LOOSE LAID OR DENS DECK
- 3) INSULATION MECHANICALLY FASTENED WITH 8 FASTENERS PER 4X8 PANEL AND 4 FASTENERS PER 4X4 TO KEEP FROM BOWING
- 4) INSULATION LOOSE LAID AND WEIGHTED IN PLACE WITH $\frac{1}{2}$ " GYPSUM, DENS DECK, OR EQUAL

Note: 2001 Co. recommends using reinforced membrane under compression board for ease of workmanship

SCREW TERM BAR, NEW CATCH CLEAT, OR FASTEN BOTTOM OF EXISTING GRAVEL STOP WITH 3" FLAT HEAD SCREWS, STAGGERED 6" ON CENTER. NO NAILS, SCREWS ONLY

* FOR WIND RIDER OF OVER 60 MPH, VERIFICATION OF EXISTING ROOF ATTACHMENT TO THE DECK IS REQUIRED. SOME EXISTING ROOFS MAY REQUIRE PERIMETER CORNER AND SUBSTRATE REFASTENING.

© Thomas L. Kelly—Patent Pending

HURRICANE BACKWRAP COMPRESSION BOARD AIR SEAL
UP TO 120 MPH WIND RIDER

325 Thomaston Ave.	Scale: NTS
P.O. Box 2557	DWG #: CEPDM-HCB-100-RGS
Waterbury, CT 06702	Rev. Date: 9/24/11
Tele: 1 (800) 537-7663	Rev. #: 9