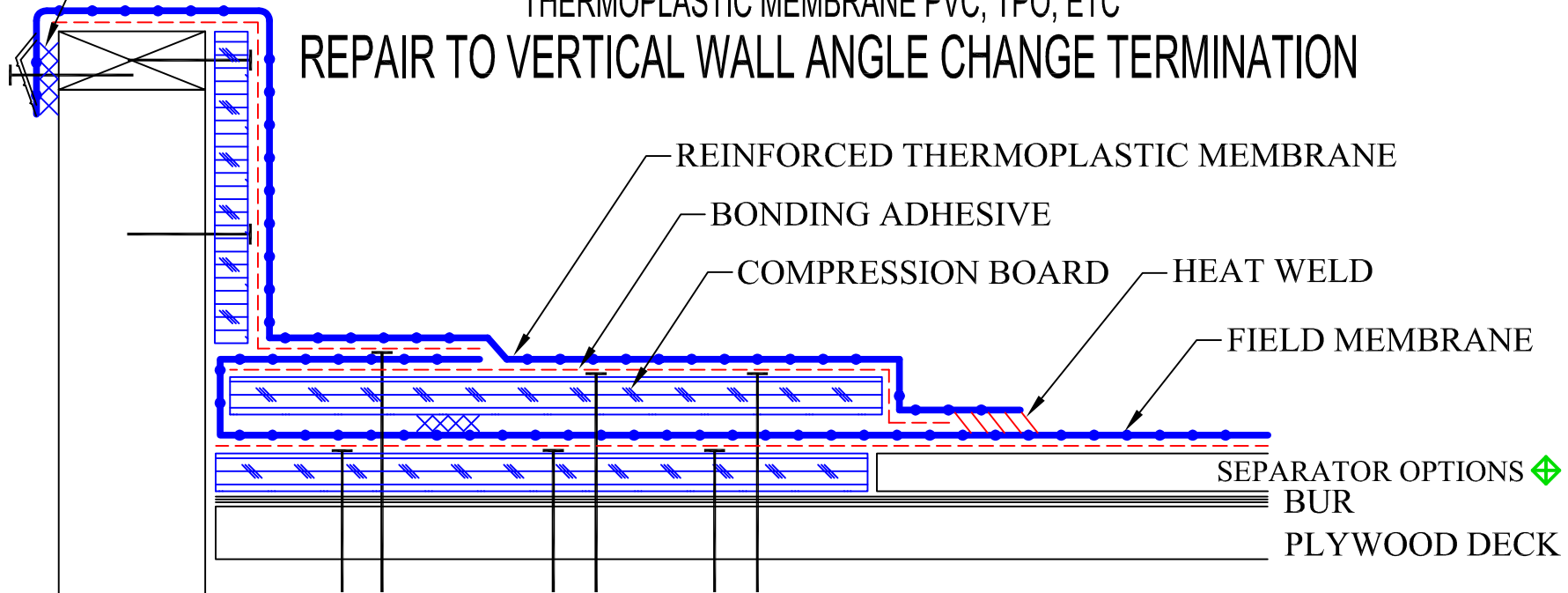


TERM BAR AND
TERM BAR TAPE

HURRICANE BACKWRAP COMPRESSION BOARD AIR SEAL UP TO 120 MPH WIND RIDER *

THERMOPLASTIC MEMBRANE PVC, TPO, ETC

REPAIR TO VERTICAL WALL ANGLE CHANGE TERMINATION



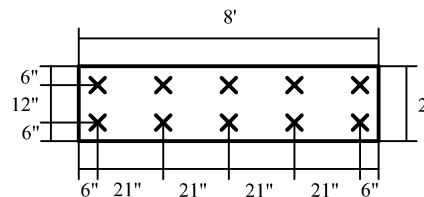
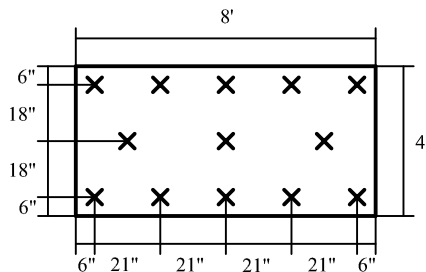
COMPRESSION BOARD AIR SEAL

MINIMUM 1/2" CDX PLYWOOD OR 7/16" OSB BOARD

- A) 2' COMPRESSION BOARD ON BUILDINGS
29' OR LESS IN HEIGHT AND INTERNAL PENETRATIONS
- B) 4' COMPRESSION BOARD ON BUILDINGS
30' OR HIGHER OR 90 MPH OR GREATER WIND RIDERS
FASTENED WITH #14 ROOF SCREWS AND 2" FLAT WASHERS

◆ SEPARATOR OPTIONS:

- 1) 2001 GRAVEL MAT
- 2) 1/2" GYPSUM LOOSE LAID OR DENS DECK
- 3) INSULATION MECHANICALLY FASTENED WITH 8 FASTENERS PER 4X8 PANEL AND 4 FASTENERS PER 4X4 TO KEEP FROM BOWING
- 4) INSULATION LOOSE LAID AND WEIGHTED IN PLACE WITH 1/2" GYPSUM, DENS DECK, OR EQUAL



*FOR WIND RIDER OF OVER 60 MPH, VERIFICATION OF EXISTING ROOF ATTACHMENT TO THE DECK IS REQUIRED.
SOME EXISTING ROOFS MAY REQUIRE PERIMETER CORNER AND SUBSTRATE REFASTENING.

© Thomas L. Kelly - Patent Pending

HURRICANE BACKWRAP COMPRESSION BOARD AIR SEAL
UP TO 120 MPH WIND RIDER

Scale: NTS	325 Thomaston Ave.
DWG #: TP-HCB-120	P.O. Box 2557
Rev. Date: 5/24/11	Waterbury, CT 06702
Rev. #: 7	Tele: 1 (800) 537-7663