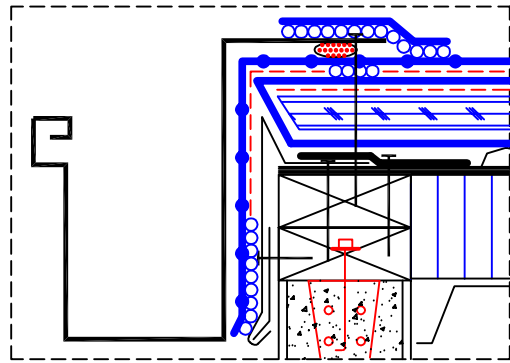


HURRICANE BACKWRAP COMPRESSION BOARD AIR SEAL

UP TO 120 MPH WIND RIDER *

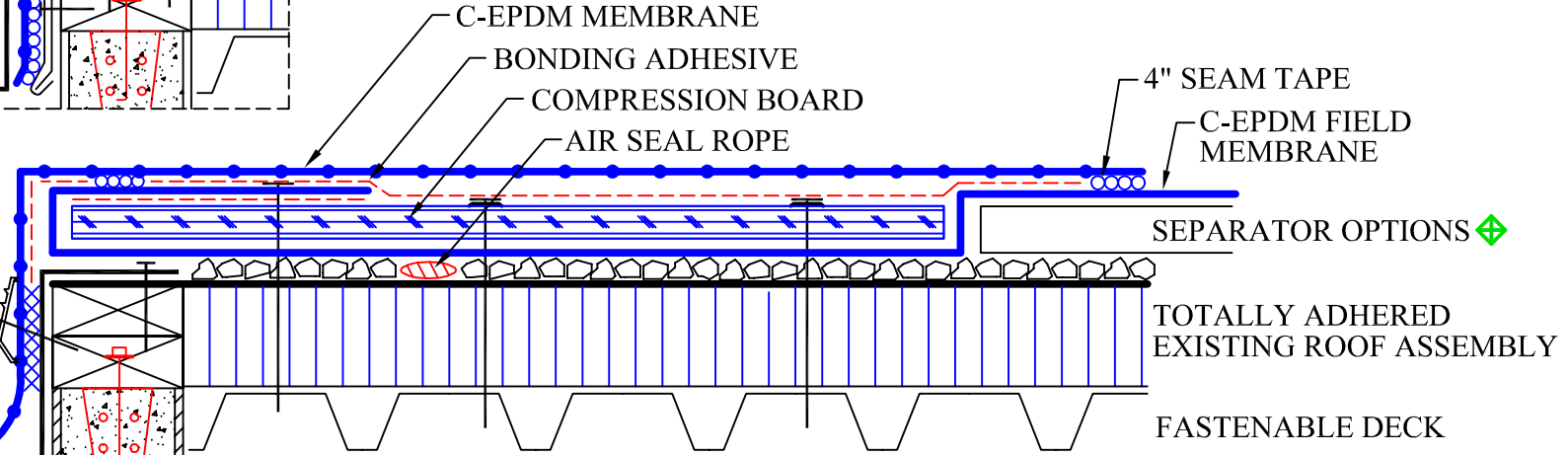
C-EPDM MEMBRANE

NEW OR EXISTING GUTTER



TERM BAR AND TERM BAR TAPE

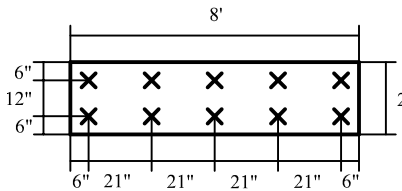
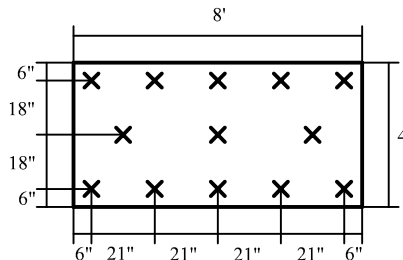
EXTEND MEMBRANE INTO GUTTER FOR RIP THROUGH RESISTANCE



COMPRESSION BOARD AIR SEAL

MINIMUM $\frac{1}{2}$ " CDX PLYWOOD OR $\frac{7}{16}$ " OSB BOARD

- A) 2' COMPRESSION BOARD ON BUILDINGS
29' OR LESS IN HEIGHT AND INTERNAL PENETRATIONS
- B) 4' COMPRESSION BOARD ON BUILDINGS
30' OR HIGHER OR 90 MPH OR GREATER WIND RIDERS
FASTENED WITH #14 ROOF SCREWS AND 2" FLAT WASHERS



SEPARATOR OPTIONS:

- 1) 2001 GRAVEL MAT
- 2) $\frac{1}{2}$ " GYPSUM LOOSE LAID OR DENS DECK
- 3) INSULATION MECHANICALLY FASTENED WITH 8 FASTENERS PER 4X8 PANEL AND 4 FASTENERS PER 4X4 TO KEEP FROM BOWING
- 4) INSULATION LOOSE LAID AND WEIGHTED IN PLACE WITH $\frac{1}{2}$ " GYPSUM, DENS DECK, OR EQUAL

Note: 2001 Co. recommends using reinforced flashing membrane with compression board for ease of workmanship

* FOR WIND RIDER OF OVER 60 MPH, VERIFICATION OF EXISTING ROOF ATTACHMENT TO THE DECK IS REQUIRED. SOME EXISTING ROOFS MAY REQUIRE PERIMETER CORNER AND SUBSTRATE REFASTENING.

© Thomas L. Kelly - Patent Pending

HURRICANE BACKWRAP COMPRESSION BOARD AIR SEAL
UP TO 120 MPH WIND RIDER

325 Thomaston Ave.	Scale: NTS
P.O. Box 2557	DWG #: CEPDM-HCB-100-2
Waterbury, CT 06702	Rev. Date: 6/1/11
Tele: 1 (800) 537-7663	Rev. #: 7