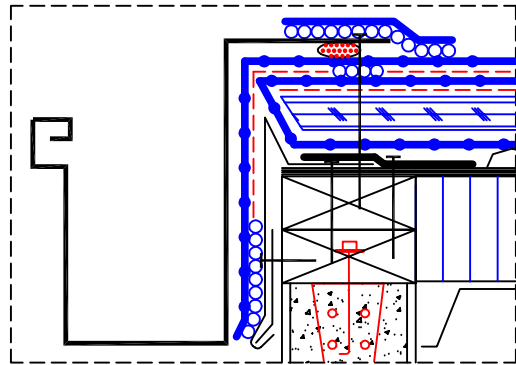
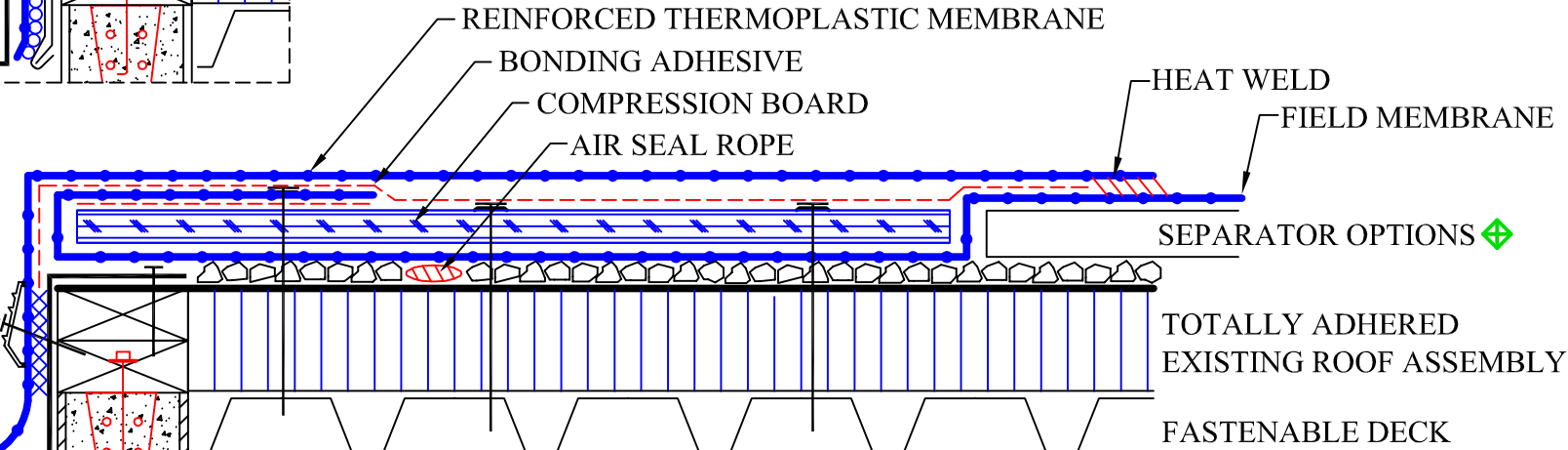


HURRICANE BACKWRAP COMPRESSION BOARD AIR SEAL
 UP TO 120 MPH WIND RIDER *
 THERMOPLASTIC MEMBRANE PVC, TPO, ETC
 NEW OR EXISTING GUTTER



TERM BAR AND
 TERM BAR TAPE

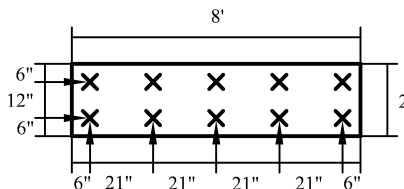
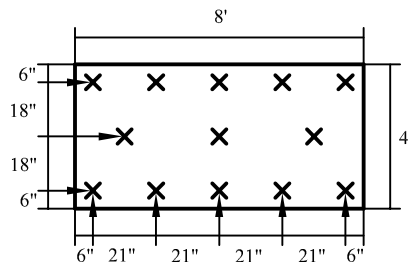
EXTEND MEMBRANE
 INTO GUTTER FOR RIP
 THROUGH RESISTANCE



COMPRESSION BOARD AIR SEAL

MINIMUM 1/2" CDX PLYWOOD OR 7/16" OSB BOARD

- A) 2' COMPRESSION BOARD ON BUILDINGS
 29' OR LESS IN HEIGHT AND INTERNAL PENETRATIONS
- B) 4' COMPRESSION BOARD ON BUILDINGS
 30' OR HIGHER OR 90 MPH OR GREATER WIND RIDERS
 FASTENED WITH #14 ROOF SCREWS AND 2" FLAT WASHERS



SEPARATOR OPTIONS:

- 1) 2001 GRAVEL MAT
- 2) 1/2" GYPSUM LOOSE LAID OR DENS DECK
- 3) INSULATION MECHANICALLY
 FASTENED WITH 8 FASTENERS
 PER 4X8 PANEL AND 4 FASTENERS
 PER 4X4 TO KEEP FROM BOWING
- 4) INSULATION LOOSE LAID AND
 WEIGHTED IN PLACE WITH 1/2" GYPSUM,
 DENS DECK, OR EQUAL

*FOR WIND RIDER OF OVER 60 MPH, VERIFICATION OF EXISTING ROOF ATTACHMENT TO THE DECK IS REQUIRED.
 SOME EXISTING ROOFS MAY REQUIRE PERIMETER CORNER AND SUBSTRATE REFASTENING.

© Thomas L. Kelly—Patent Pending

HURRICANE BACKWRAP COMPRESSION BOARD AIR SEAL
 UP TO 120 MPH WIND RIDER

| | |
|------------------------|---------------------|
| 325 Thomaston Ave. | Scale: NTS |
| P.O. Box 2557 | DWG #: TP-HCB-100-2 |
| Waterbury, CT 06702 | Rev. Date: 6/1/11 |
| Tele: 1 (800) 537-7663 | Rev. #: 7 |