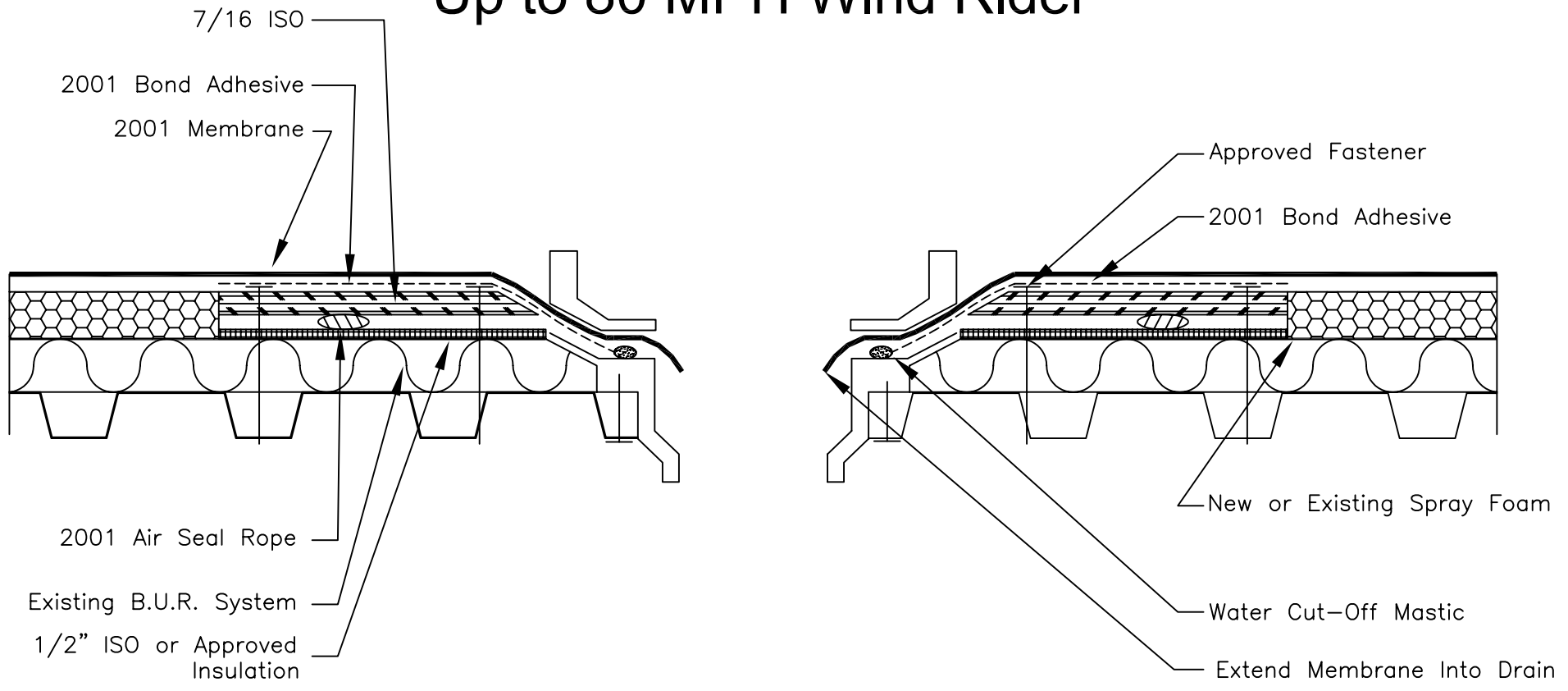
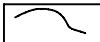

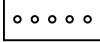
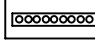
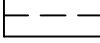
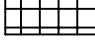



Spray Foam cut back and Compression Board Air Seal installed over existing BUR at drain Up to 80 MPH Wind Rider



	Caulk		Kellycrete
	Rubber to Rubber		2001 Zip Tape
	Bonding Adhesive		Insulation
	Water Cut-off Mastic		

TITLE: Drain Detail			
Dwg #:	SF-14	Drawn by:	MAE/RLH
Rev. Date:	11/28/98	Approved by:	TK / JS
Dwg. Date:	10/15/95	Scale:	No Scale

2001 Company

325 Thomaston Ave.
P.O. Box 2557
Waterbury, CT 06702-2557

© Thomas L. Kelly - Patent Pending