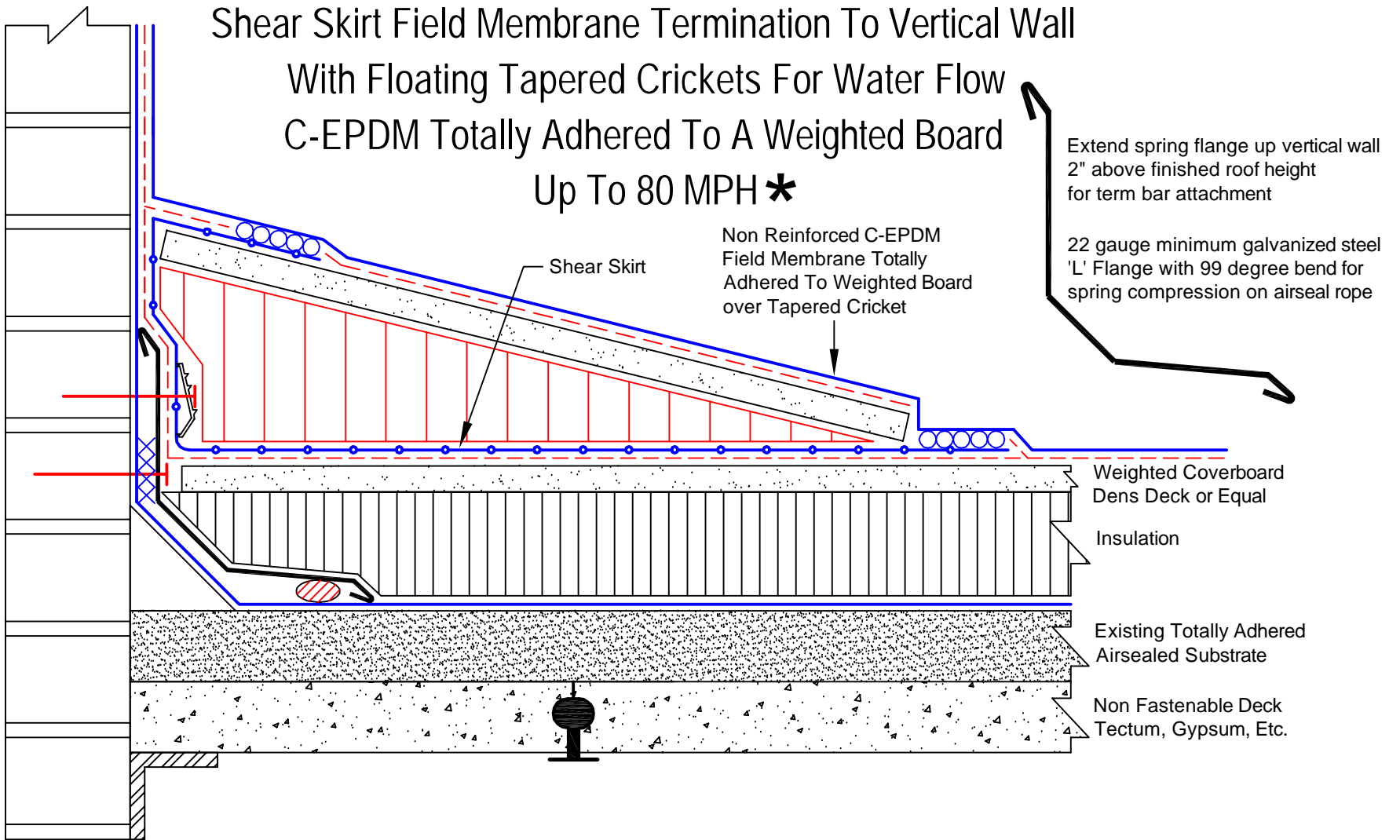


Earthquake Spring Flange Airseal

Shear Skirt Field Membrane Termination To Vertical Wall
 With Floating Tapered Crickets For Water Flow
 C-EPDM Totally Adhered To A Weighted Board
 Up To 80 MPH *



* For greater than 80 MPH Wind Rider, the Wall To Deck Air Seal must be approved by 2001 Co. for specific Wall To Deck Construction.

C-EPDM-SFAS/DMT-80-VW+FC

	4" Seam Tape
	Adhesive
	Insulation
	2001 Term. Bar Tape

	Air Seal Rope
	Gypsum
	Concrete
	Existing Roof

Spring Flange Air Seal Over Wall Expansion Joint

Dwg #: C-EPDM-SFAS/DMT-80-VW+FC

Rev. Date: 3/24/11

Drawn by: Delventhal

Dwg. Date: 7/19/10

Approved by: LeRoy

2001 Company

325 Thomaston Av.
 P.O. Box 2557
 Waterbury, CT 06702-2557

© Thomas L. Kelly - Patent Pending