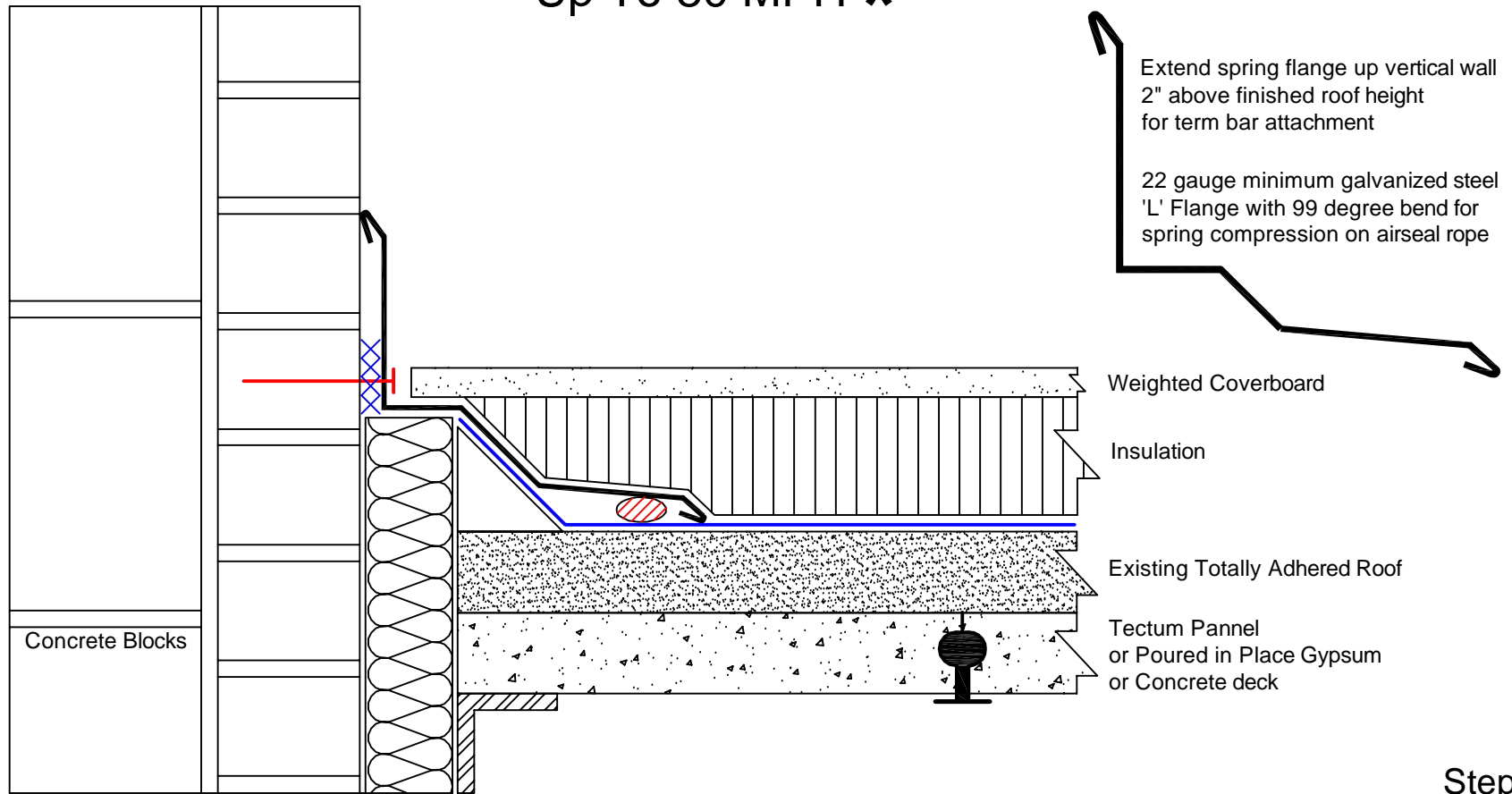


Spring Flange Air Seal over Wall Expansion Joint

Direct Membrane Termination To Vertical Wall

90 Mil or Reinforced C-EPDM Loose Laid

Up To 80 MPH *



Extend spring flange up vertical wall 2" above finished roof height for term bar attachment

22 gauge minimum galvanized steel 'L' Flange with 99 degree bend for spring compression on airseal rope

Weighted Coverboard

Insulation

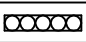

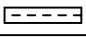
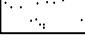

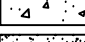


Existing Totally Adhered Roof

Tectum Pannel or Poured in Place Gypsum or Concrete deck

Step 2

* For greater than 80 MPH Wind Rider, the Wall To Deck Air Seal must be approved by 2001 Co. for specific Wall To Deck Construction.

C-EPDM-SFAS/DMT-80-VW

 4" Seam Tape	 Wood	Spring Flange Air Seal Over Wall Expansion Joint		<div style="border: 2px solid black; padding: 5px; display: inline-block;">2001 Company</div> 325 Thomaston Av. P.O. Box 2557 Waterbury, CT 06702-2557 © Thomas L. Kelly - Patent Pending
 Adhesive	 Gypsum	Dwg #: C-EPDM-SFAS/DMT-80-VW		
 Insulation	 Concrete	Rev. Date: 7/19/10	Drawn by: Delventhal	
 2001 Term. Bar Tape	 Existing Roof	Dwg. Date: 7/19/10	Approved by:	