

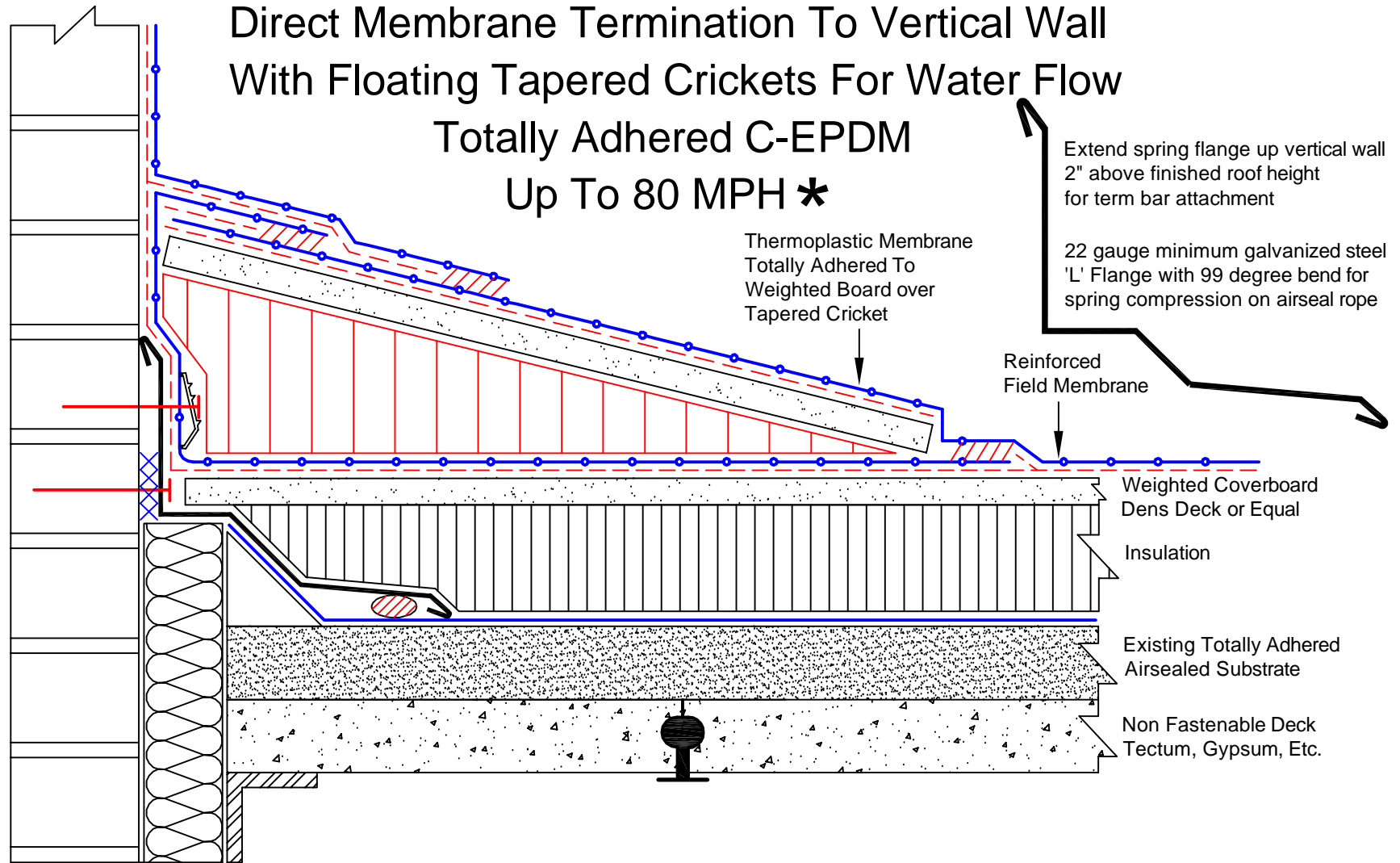
Spring Flange Airseal over Wall Expansion Joint

Direct Membrane Termination To Vertical Wall

With Floating Tapered Crickets For Water Flow

Totally Adhered C-EPDM

Up To 80 MPH *



* For greater than 80 MPH Wind Rider, the Wall To Deck Air Seal must be approved by 2001 Co. for specific Wall To Deck Construction.

C-EPDM-SFAS/DMT-80-VW+FC

	4" Seam Tape		Air Seal Rope
	Adhesive		Gypsum
	Insulation		Concrete
	2001 Term. Bar Tape		Existing Roof

Spring Flange Air Seal Over Wall Expansion Joint

Dwg #: C-EPDM-SFAS/DMT-80-VW+FC

Rev. Date: 3/24/11

Drawn by: Delventhal

Dwg. Date: 7/19/10

Approved by: LeRoy

2001 Company

325 Thomaston Av.
P.O. Box 2557
Waterbury, CT 06702-2557

© Thomas L. Kelly - Patent Pending