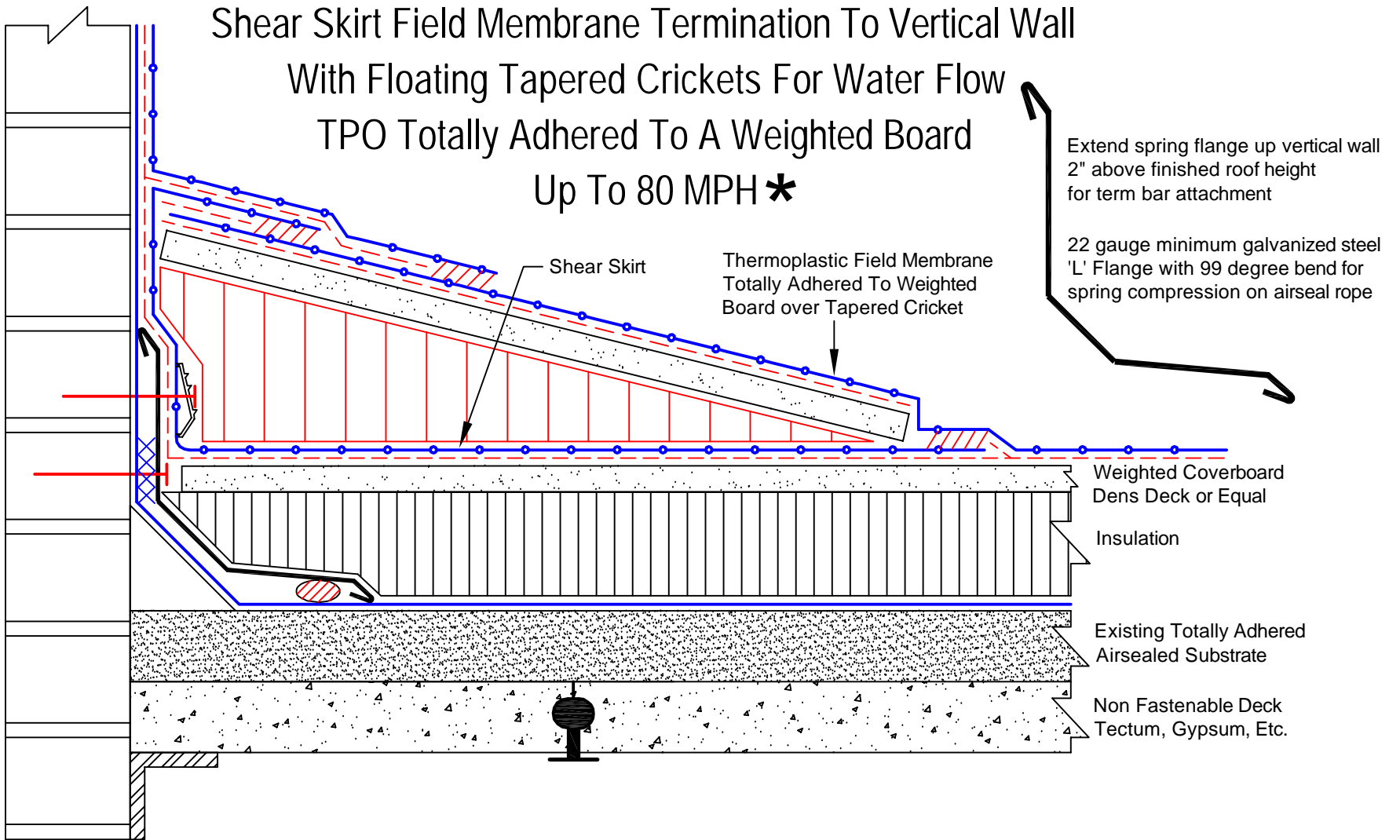


Earthquake Spring Flange Airseal

Shear Skirt Field Membrane Termination To Vertical Wall
 With Floating Tapered Crickets For Water Flow
 TPO Totally Adhered To A Weighted Board
 Up To 80 MPH *



Extend spring flange up vertical wall 2" above finished roof height for term bar attachment

22 gauge minimum galvanized steel 'L' Flange with 99 degree bend for spring compression on airseal rope

* For greater than 80 MPH Wind Rider, the Wall To Deck Air Seal must be approved by 2001 Co. for specific Wall To Deck Construction.

C-EPDM-SFAS/DMT-80-VW+FC

	4" Seam Tape
	Adhesive
	Insulation
	2001 Term. Bar Tape

	Air Seal Rope
	Gypsum
	Concrete
	Existing Roof

Spring Flange Air Seal Over Wall Expansion Joint

Dwg #: C-EPDM-SFAS/DMT-80-VW+FC

Rev. Date: 3/24/11

Drawn by: Delventhal

Dwg. Date: 7/19/10

Approved by: LeRoy

2001 Company

325 Thomaston Av.
 P.O. Box 2557
 Waterbury, CT 06702-2557

© Thomas L. Kelly - Patent Pending