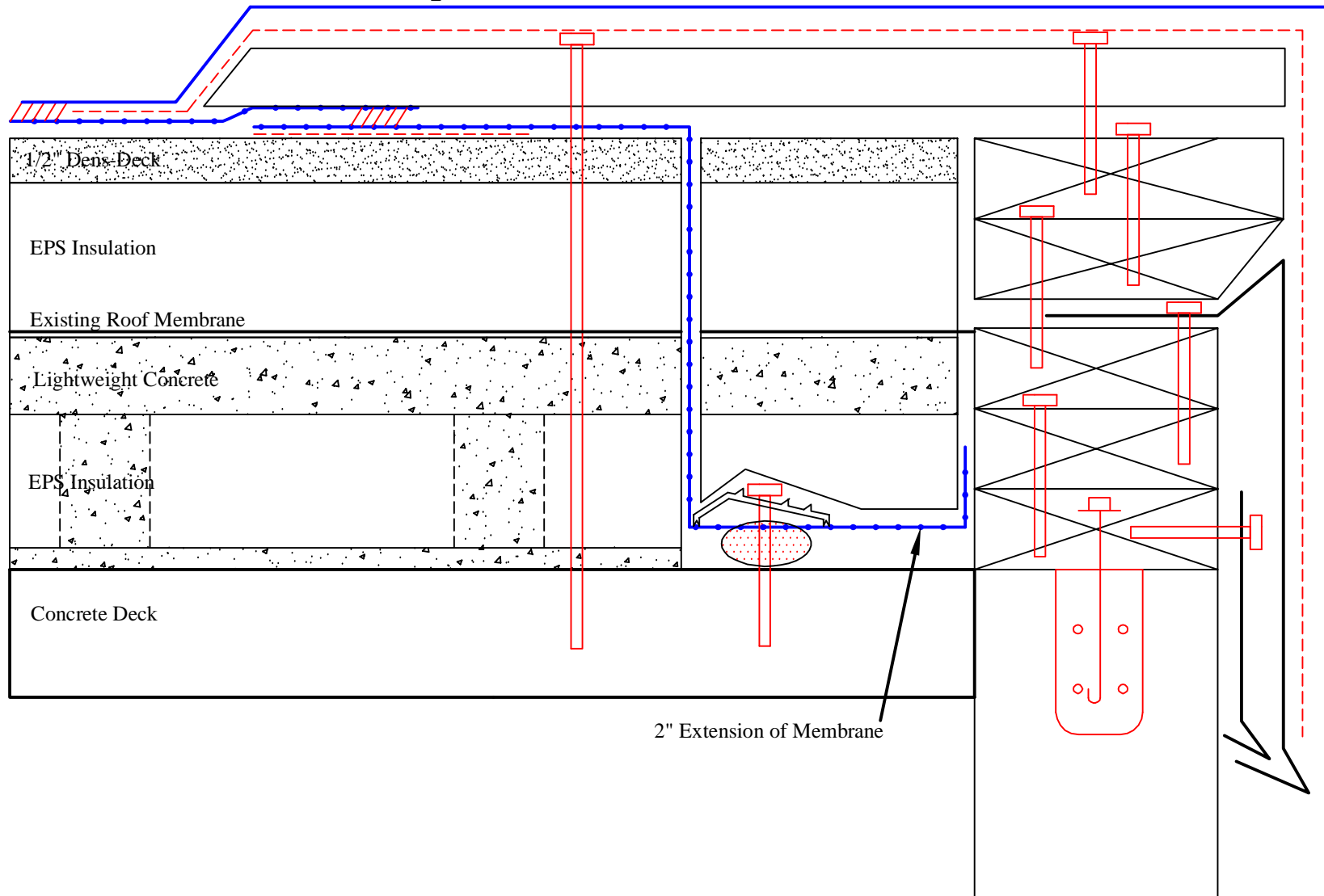
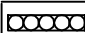
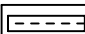



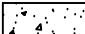
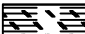


2001 Direct to Deck Air Seal and Water Dam up to 150 MPH Wind Rider



-  4" Seam Tape
-  Adhesive
-  Insulation
-  Air Seal Rope

-  Concrete
-  OSB Board
-  Gypsum

Direct to Deck

Dwg #: Direct to Deck Para.	Drawn by: BH
Rev. Date: 7/7/08	Approved by:
Dwg. Date: 5/31/06	Scale: NTS

2001 Company

325 Thomaston Av.
P.O. Box 2557
Waterbury, CT 06702-2557

© Thomas L. Kelly - Patent Pending