

2001 Wind Up Lift Transfer Roof Technology CBS Television City Studios, Los Angeles CA



2001 CPA Membrane 10 Years Old And Going Strong 4



CBS Chooses 2001 Roof System Because:

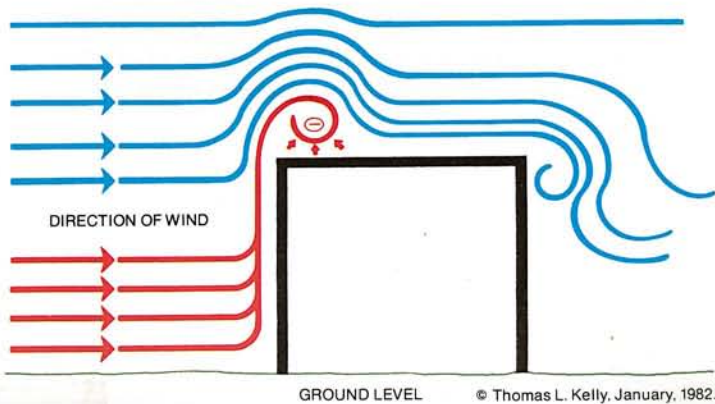
1. **NO NOISE:** Conventional roof systems require **thousands** of mechanical fasteners to be **drilled into the roof deck**. This would shut down filming operations completely. The roofing contractor performed minimal edge flashing during non-filming minutes. The 2001 roof system is loose laid over the existing **without fasteners or ballast**.
2. **NO STRUCTURAL DAMAGE:** With thousands of fasteners being installed into a concrete deck with competitive mechanically attached roofs, parallel 6 foot lines of pre-drilled holes with mechanical fasteners structurally weaken the roof deck. **2001 eliminates deck fastening.**

3. Superior Wind Resistance 150 MPH:

Wind guarantee is available for 2001 Roof Systems on a concrete deck. Patented 2001 **Equalizer Valves** placed on the building perimeter edge **transfer wind up lift low pressure into the roof assembly** causing the roof membrane to be sucked down to the roof deck.

WIND FLOW ACROSS BUILDINGS WITH STANDARD GRAVEL STOP EDGE

MINUS - AIR PRESSURE - CREATED FROM WIND UP THE SIDE OF BUILDING CAUSING VORTEX



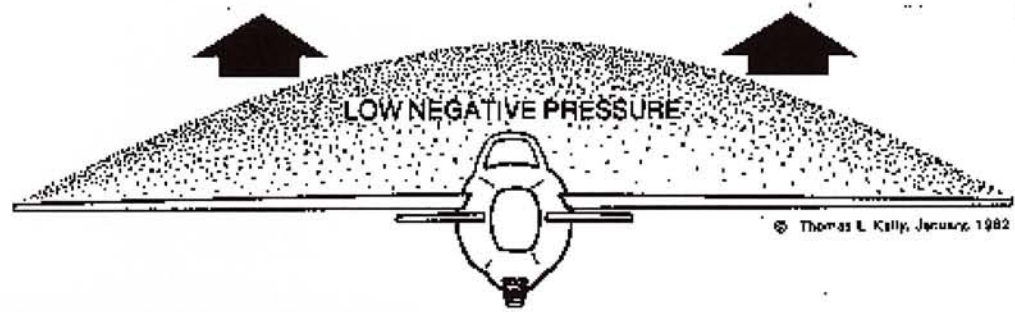
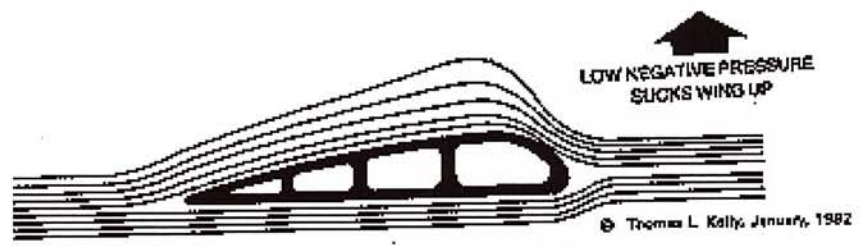
EQUALIZER VALVES



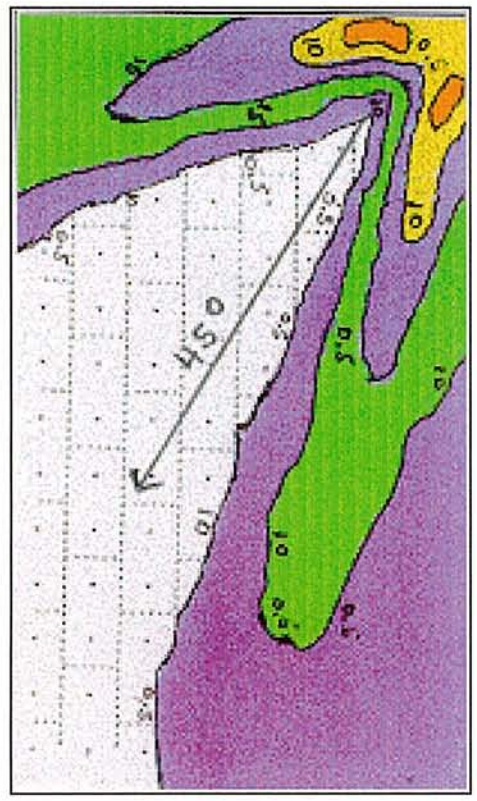
When wind blows across a building it creates a wave, or laying down tornado effect, along the perimeter edges and corners called a wind vortex. **In the wind vortex area the vacuum pressures are intensified** one valve in the right location is worth 100 valves scattered throughout the roof or thousands of mechanical fasteners.

2001 ROOFS USE AIRPLANE AREODYNAMICS

Wind being split by an airplae wing creates low vacuum pressure on the top surface of the wing sucking the wing upward.

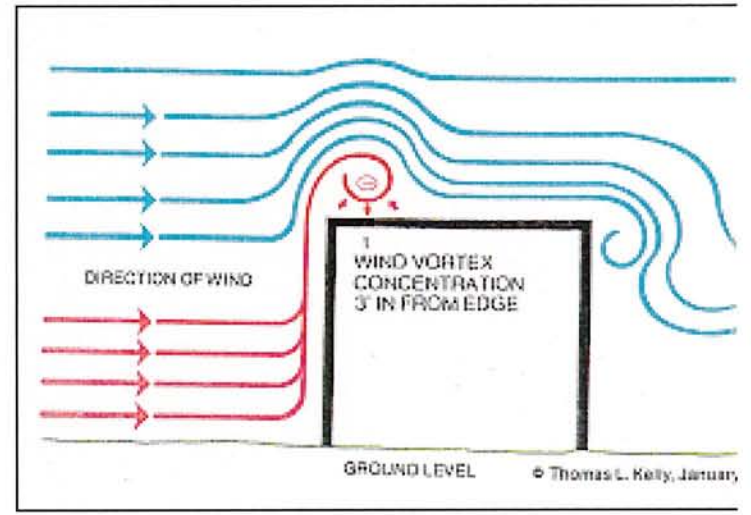
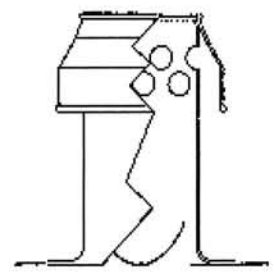


Wind Over The Edge Of A Building Creates Negative Low Vacuum Pressure Similar To An Air Plane Wing That Tries To Suck A Roof Off The Building



2001 Company Uses Computer Graphics To Locate Wind Generated Low Pressures On A Roof Edge Where
2001
EQUALIZER

Are Installed Through The Membrane



Equalizer Valves Transfer Wind Generated Vacuum Pressure To Suck The Roof To The Deck.

4. Ability To Re-roof Over An Existing Wet Roof Without

Tear Off: 2001 Vented Technology will **dry out an existing wet roof** assembly that is air permeable to the new **Equalizer Valve Vented Roof System**. By drilling ½” holes, one every 2 square feet, through the existing roof membrane in wet areas water vapor can come up into the new vented roof system and be exhausted out through the perimeter equalizer valves.

5. Able To Resist Ponding Water: 2001 Company C-EPDM and CPA roof membranes were first designed for liquid pollution containment pond liners. **These membranes can take stagnant water ponds and not deteriorate.**

6. Positive Tapered Insulation Systems Are Optional: and always recommended when the owner can pay increased price. But, positive water drainage **is not necessary** for a 2001 warranty with CPA and C- EPDM Membranes.



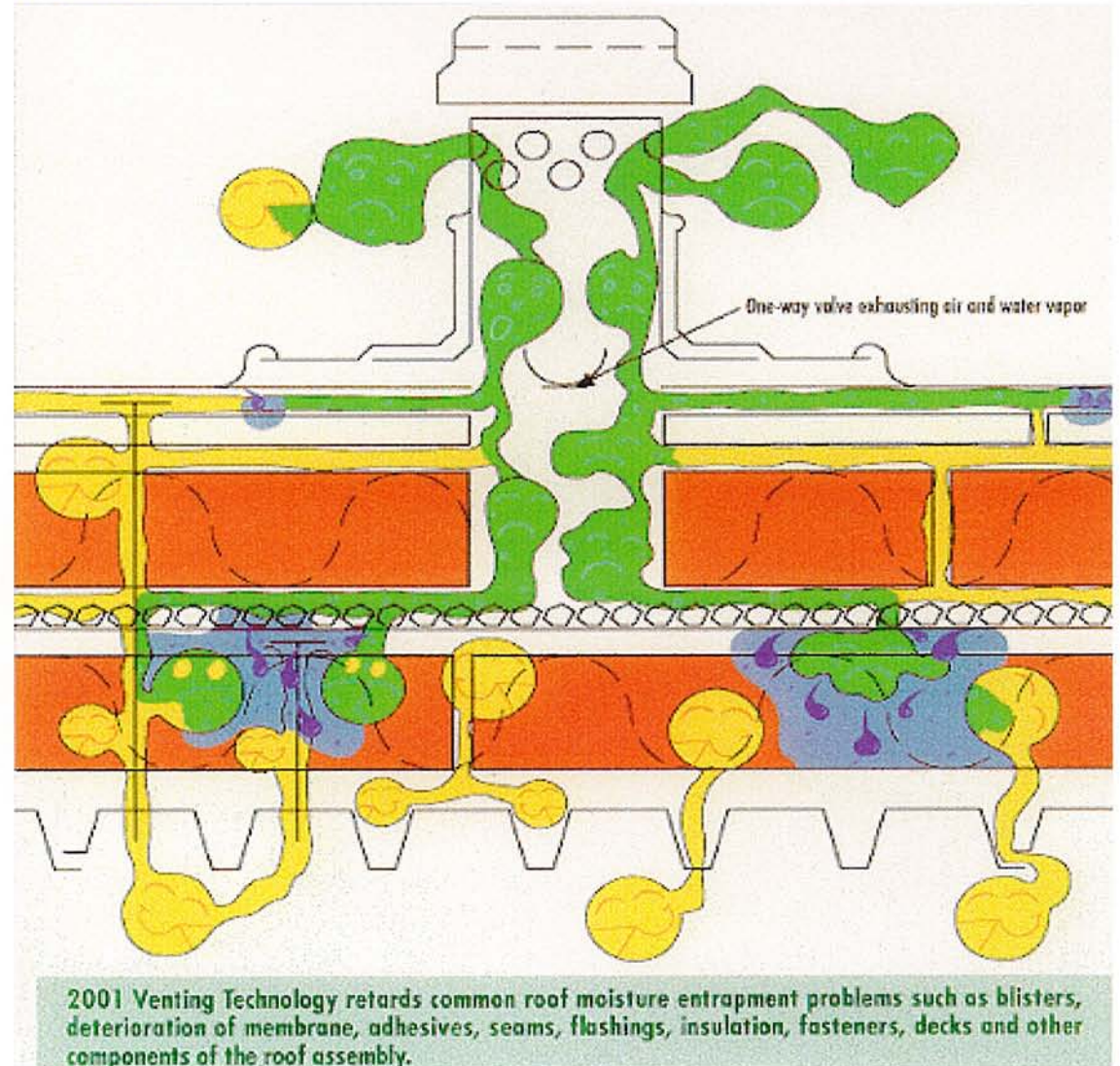
EQUALIZER VALVES VENT MOISTURE

2001 VACUUM VENTING

Of a roof assembly causes a continual drying of the roof substrate.

Wind generated low pressure transferred under the roof membrane causes water in the roof assembly to vaporize. Water in this gaseous state can then egress under the roof membrane and be drawn out through the equalizer valves when the wind blows

Should roof damage occur in the future, causing leaks, the wet roof insulation substrate will dry itself out through the 2001 Equalizer Valves. Once the source of the leak has been repaired.



7. Chemical And Corrosion Resistance Of CPA Sheet:

Multiple Mechanical Units across the roof give off chemicals and corrosive salts.

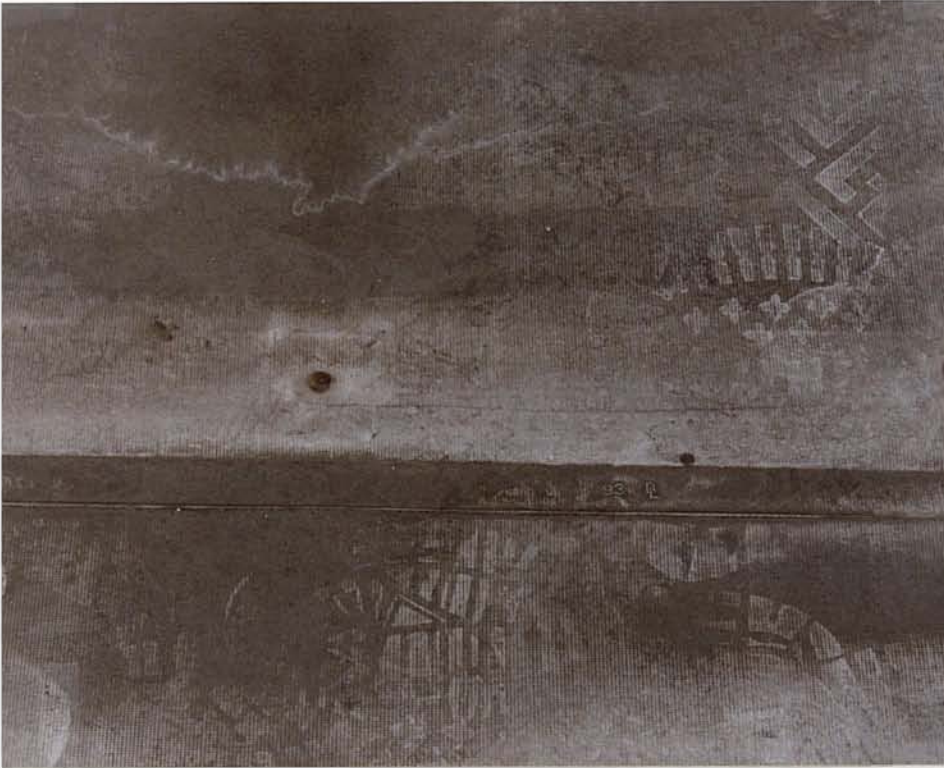
Superior chemical resistance of 2001 Co-Polymer Alloy roof membrane can withstand constant wetting and corrosive build up.

NOTE: Yearly clean up and maintenance is recommended.



8. Fastener Back Out Damage:

Of competitive PVC Sheet Causing Lap Edge holes From Plasticsizer Loss And Screw Back Out Is Not Present In The 2001 CPA Membrane Installed During The Same Time Period



9. Dirt Accumulation: In Fabric surface of competitive PVC **reduces white sheet Reflectivity 75%**. 2001 Co. CPA thicker, smooth, surface allows soot to be washed away easily in the rain.



CBS Has Been Dry Since 2001 CPA System Was Installed
The Ease Of Re-Welding Makes The CPA Membrane System Manageable

2001 Co. PO Box 2553, Wtby CT 06723 **1 (800) 537-7663**